



- SP40 - OPEN PLUS

LADYBIRD ROLL PLUS TRANSMITTERS MANAGEMENT SOFTWARE

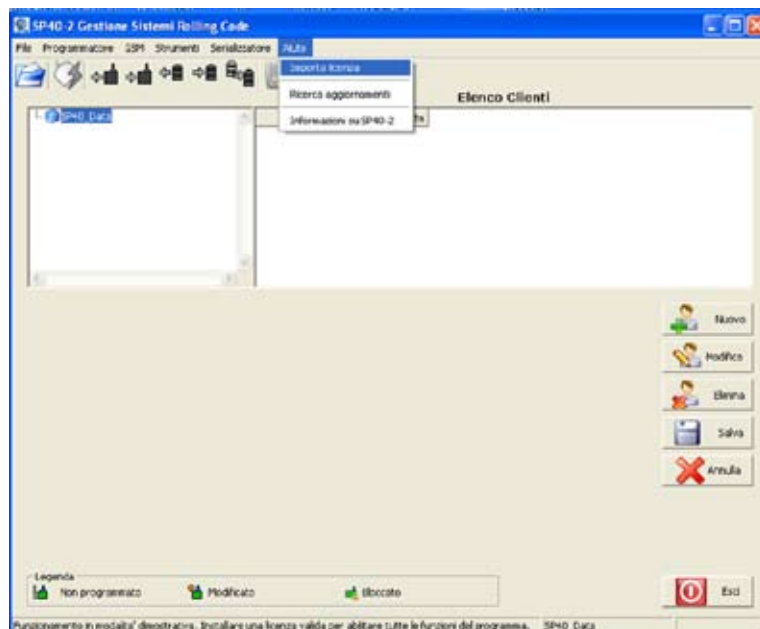
INDEX

1	<i>FIRST START OF THE PROGRAM</i>	3
2	<i>CONNECTION TO THE PROGRAMMER</i>	4
3	<i>INSERTION OF A NEW CUSTOMER</i>	5
4	<i>INSERTION OF A NEW INSTALLATION</i>	5
5	<i>INSERTION OF A NEW RECEIVER</i>	6
6	<i>INSERTION OF A NEW REMOTE CONTROL</i>	7
7	<i>ASSOCIATION OF ONE TX WITH MORE RX</i>	10
8	<i>SPECIAL FEATURES</i>	11
9	<i>RESEARCH FOR UPDATES</i>	13
10	<i>READING AND MODIFICATION OF A RECEIVER</i>	14
11	<i>READ AND DELETE A REMOTE CONTROL</i>	15
12	<i>CONNECTION TO A CONTROL UNIT</i>	15
	<i>CONDIZIONI DI VENDITA TERMS OF SALES</i>	16

1. FIRST START OF THE PROGRAM

The SP40 CD contains the installation software (.exe), the user manual (.pdf) and the user license (.sig).

Once the (.exe) file has been installed, at the first start, the working directories are created and the default settings are loaded. Now connect the OPEN PLUS programmer through the special USB cable and activate the provided user license.



USER LICENSE ACTIVATION

The user license contains the name of its owner and the programmer's serial number through which it is possible to operate.

To import the license file (.sig) from the CD select "IMPORT LICENSE" in the HELP menu of the toolbar. If the file is missing, contact your retailer or SEA Srl for product activation.

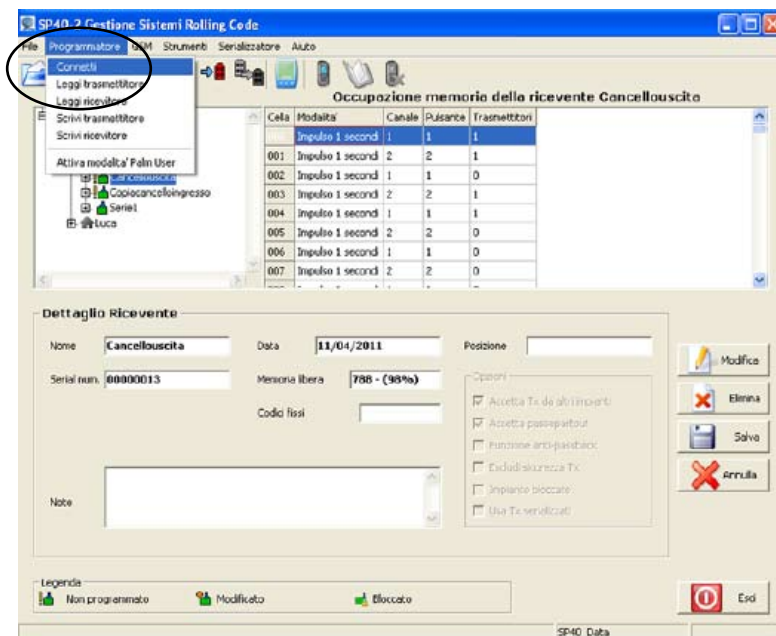
FUNCTIONING IN DEMO MODE

When the system does not reveal the presence of a license or verifies that the same has expired, it will run a DEMO mode allowing only the vision of the functions in the database of the system; it will not permit connections to the programmer and will not save modifications of the database.

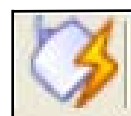
2.

CONNECTION TO THE PROGRAMMER

Click on
PROGRAMMER
then on **CONNECT**



CONNECTION ALSO POSSIBLE BY CLICKING THE BUTTON



CONNECTION WITH A PROGRAMMER DIFFERENT FROM THE ONE FORESEEN BY THE LICENSE

If the connected programmer is different from the one foreseen by the license, operations on the devices are not allowed. It is possible to operate with a different OPEN PLUS device only if you have its license number. It is still possible to operate on the database without losing the inserted modifications.

IF THE CONNECTION HAS BEEN SUCCESSFUL THE REVEALED DEVICES ARE SHOWN IN THE TITLE-BAR

3. INSERTION OF A NEW CUSTOMER

Select SP40-DATA to add a new customer. Now you can proceed in two ways: either by clicking the NEW button of the menu on the right or by clicking the right button of the mouse and selecting the item NEW CUSTOMER.

Fill in the highlighted fields and click on the SAVE button to record the new customer in the database and displayed in the window on the right.

ATTENTION: The file and all the devices therein (radio transmitter, receiver, USER control unit etc.) will be programmed in an encrypted manner. No operation can be done (add, delete etc.) on these devices without the management through an OPEN PLUS device and without being in possession of the relevant users license.

4. INSERTION OF A NEW INSTALLATION

It is possible to insert a new installation clicking with the right button of the mouse on the customer's name.

Fill in the highlighted fields and clicking on the SAVE button the new installation will be registered in the database and displayed in the right window under CLIENT'S INSTALLATIONS.

5. INSERTION OF A NEW RECEIVER

It is possible to insert a new receiver clicking with the right button of the mouse on the installation's name. Choose the desired settings and click on the SAVE button to register the new receiver in the database

RECEIVER'S OPTIONS

IT IS POSSIBLE TO SELECT THE FIELDS BELOW IN THE OPTIONS PANEL:

1- ACCEPT TX FROM OTHER INSTALLATIONS

If enabled, the receiver will accept remote controls from other installations.

Note: The activation of this function will make the installation less safe

2- ACCEPT MASTER KEY

This function is enabled by default and allows the receiver to accept MASTER KEY remote controls linked to all receivers in the data-base

3- LEARNING BUTTON DISABLED

If activated, this function locks the push-button for manual learning of the remote controls on the receiver.

EMPLOYMENT OF THE RECEIVER'S MEMORY

On the "EMPLOYED MEMORY" grid it is possible to view the current transmitters or those ready to be memorized on the receiver. When inserting a new receiver the system automatically issues a memory file with the default settings. The appearing grid shows:

1. Activation modality of the Rx channel
2. Rx channel on which the command will act
3. Tx button to activate the channel
4. Number of programmed Tx

6. INSERTION OF A NEW TRANSMITTER

6.1 BASIC MODE: In this mode the remote controls must be programmed individually as they will transmit the functioning mode to the receiver. Once programmed store them individually on the Rx.

During the programming procedure the remote control acquires: the installation Code, the channel and the timing to activate on the receiver:

- The installation Code will enable the receiver to store only the remote controls transmitting the same code.

NOTE: The first programmed transmitter will be the one transmitting this code to the receiver.

- The acquisition of the channel and its timing will allow every single button of the remote control to transmit to the receiver the channel which has to be activated and the procedure on how to do it.

PROGRAMMING IN «BASIC» MODE

- Select the receiver to which you want to assign the remote control in the left panel.
- Click with the right button of the mouse and select ADD REMOTE CONTROLS
- In INSERTION OF NEW REMOTE CONTROLS set for each button of the remote control the channel and the timing to be assigned to the receiver.
- In INSERT DEVICES write the number of transmitters to be programmed
- Plug the transmitter to the programmer
- In the right window will appear the list of buttons and their functions
- Select in the right window as many rows as buttons on the remote control that you want to program.
- Click on WRITE TRANSMITTER
- You are asked to name the device: enter a name and click OK

You should store the remote control on the receiver once programmed. In this way it will receive only transmitters programmed in this mode and assigned to this specific installation.

ADVANTAGES: In this mode the remote control is predisposed to transmit all information relating to the installation, so that you can replace the receiver at any time with a new one; this operation is useful to retrieve the remote controls where a failure should occur in the receiver and it is not possible to have the programmer OPEN PLUS with which they were programmed. Another advantage is the fact that in this mode it is not necessary to program the receiver.

DISADVANTAGES: Without programming the receiver, the installation will be more vulnerable and not entirely related to the specific OPEN PLUS which remote controls were programmed with. You also will not have a receiver's tracking on your database if it should become necessary to read its parameters. Every single remote control must be programmed on the receiver.

6.2 PLUS BASIC MODE: Further to the remote controls programming, in PLUS BASIC MODE it is possible to program also the receiver. In this case it will no longer be necessary to program individually the various Tx on the receiver. Once programmed, the receiver will accept also remote controls which have been programmed afterwards.

PROGRAMMING IN «PLUS BASIC» MODE

To program in PLUS BASIC mode proceed as for the BASIC MODE and add the following programming procedure of the receiver at the end:

- Select the receiver in the left window, connect it to the OPEN PLUS programmer with the special plug, and click on ADD RECEIVER.

Now the receiver is ready to accept all remote controls in the right window which have to be programmed.

Programming the receiver it is also possible to activate the following functions:

- 1 – Accept TX from other installations
- 2 – Lock learning button

ADVANTAGES: The receiver accepts all remote controls programmed in its grid of affiliation, therefore it will be possible to program a remote control and make it function without programming it on the receiver. Furthermore the receiver will be tracked on the database.

NOTE: In both described programming modes it is possible to use the MASTER KEY and the LOCK/UNLOCK remote controls (transmitters programmed to enable or disable the reception on Rx)

6.3 SERIALIZATION MODE: All the SEA's remote controls have a serial number. This number can be used for serial insertion of more transmitters. In this mode, you must enter in the grid the lower serial number and the amount of remote controls that you are going to use. At this stage you simply have to program the receiver and all transmitters of the series will be ready for use.

IMPORTANT: This is possible only if you have remote controls with progressive serial numbers. If you want to add a new set of remote controls to a programmed receiver, you must reprogram it.

NOTE: In this mode, it is absolutely forbidden to try to program also the radio transmitters.

PROGRAMMING IN «SERIALIZATION» MODE

This mode allows to add more transmitters with progressive serial number by associating the receiver to the transmitter with the lower serial number. In this mode, only the receiver will be programmed. To program in serialization mode do as follows:

- Select the receiver to which assign the remote controls in the left panel.
- Click on the toolbar under SERIALIZER and choose the INSERT TRANSMITTERS IN SERIES function.

A popup window will appear where you can set the channel and the activation mode of the receiver on each button. In this window it is also possible to enter the number of devices and the lower serial number.

ADVANTAGES: Programming only the receiver all the remote controls of the included series are immediately operative.

DISADVANTAGES: If you want to add other remote controls, you have to reprogram the receiver.

NOTE: As the remote controls inserted into the database in this mode, are not blocked, they can be used on any SEA Rolling Code receiver and managed by any OPEN PLUS device.

NOTE: For large quantities of remote controls you can request at SEA Srl to customize the serial numbers of the devices, so that these customized remote controls only work when used in combination with receivers with the same customization.

7. ASSOCIATION ONE TX TO MULTIPLE RX

This procedure is useful in case you want to use only one radio transmitter to act on receivers which are associated with different gates.

The procedure foresees the association of each button on the remote control to a single receiver, so that each button will act on only one receiver associated to a specific gate.

PROGRAMMING:

- Choose or create the receivers of the specific installation to which you want to associate the Tx
- On each Rx create (or select if it already exists) a memory cell, which will then be copied on the specific Tx you are going to use.
- Select the RX memory cell to be associated to the Tx button **1** and program the Tx following the programming procedure of the OPEN PLUS device.
- Select a memory cell of the other Rxs and associate each one to a button of the programmed Tx then copy the cells one by one. The copy must be done in the receiver's LIST OF TRANSMITTERS associated with the programmed Tx (selecting just that Tx)
- Copying the individual cells in the programmed Tx, this last one will appear no longer programmed (because programming has been executed only on the first receiver and not on the others to which it has been simply associated). Therefore, once the association to the RX of the 4 buttons has been made, the TX must be programmed again.
- To re-program the Tx, simply select it inside the first receiver to which it has been associated, insert it in the OPEN PLUS and repeat the programming procedure again.
- Now the Tx will be present in the LIST OF TRANSMITTERS of all receivers to which it has been associated.

8. SPECIAL FUNCTIONS

COPY OF DATA OF A RECEIVER CREATED IN PLUS BASE MODE

This function is useful when you have more access controlled by the same group of remote controls (eg. two homes with automatic gate operated by two clone receivers and by the same group of remote controls)

NOTE: Receiver's cloning need not to be total, it can be cloned only for a part of the remote controls belonging to the installation.

To clone more receivers to be used on more installations:

- Create two installations and associate a receiver to each one
- Associate to the main receiver of the installation the remote controls to be used
- Select the programmed remote controls in the receiver's EMPLOYED MEMORY GRID
- Press the right button of the mouse and click on COPY SELECTED CELLS
- Select the receiver belonging to the secondary installation
- Select the rows to be copied in the EMPLOYED MEMORY grid of the receiver clone
- Press the right button of the mouse and select PASTE DATA OF COPIED CELLS

We have thus associated the main receiver's remote controls with the secondary receiver.

CREATION OF A LOCK/UNLOCK REMOTE CONTROL

This feature allows you to create a remote control associated with a specific receiver that has the ability to lock or unlock all other remote controls associated with the same receiver. This function is useful if you want to restrict the use of an access. To program a lock/unlock remote control:

- Plug the transmitter into the programmer
- Select a receiver to which you want to associate this remote control
- Press the right button of the mouse and click on WRITE A LOCK/UNLOCK TX

We have thus associated a remote control with the receiver which can lock or unlock all other remote controls programmed in it.

NOTE: Press the remote control's button **1** to block and button **2** to unblock. You can check the list of lock/unlock devices in the TOOLS section under LOCK/UNLOCK DEVICE LIST

CREATION OF A RX WITH 20 SECONDS LONG TRANSMISSION

This function allows you to create a remote control which transmission lasts for 20 seconds.

The remote control's signal will have 20 seconds to link with the receiver.

To program a remote control within 20 seconds long transmission:

- Enter the TOOLS section and select LONG TRANSMISSION (20 S)
- You will be asked for confirmation since from now on all programmed Tx will have this type of transmission.
- Clear LONG TRANSMISSION (20 S) to return to program the TX in standard transmission.

NOTE: This function will significantly reduce the duration of the Tx battery

WARNING: THIS FUNCTION CAN BE DANGEROUS IF ACCESS IS NOT WELL IN SIGHT

PROGRAMMING A MASTER KEY REMOTE CONTROL

This function allows to create one or more transmitters which can operate on all the receivers belonging to a specific customer. This function is useful if the installer wants to use one single remote control to have access to all installations realized by him, eg. for maintenance. The remote control will operate only on the programmed receivers on which the MASTER KEY function has been enabled.

To program a MASTER KEY remote control:

- Place the remote control on the OPEN PLUS programmer
- Select the customer in the left window
- Under TOOLS select PROGRAM A MASTER KEY REMOTE CONTROL

Starting from now the Master Key remote control will operate on all the receivers belonging to the customer.

Under TOOLS, selecting the MASTER KEY DEVICES LIST you can visualize the Tx's serial numbers on which this function is enabled.

PROGRAMMING A KILLER REMOTE CONTROL

This function allows to create a new remote control which can delete and replace a remote control already present on the receiver. This function is useful if you want to prevent a remote control to keep working on a specific installation (eg. in case of loss of the remote control).

To program a Killer transmitter:

- Select the receiver which is associated to the remote control to be removed
- Select the remote control to be replaced
- Click on PROGRAM A KILLER DEVICE and confirm

The serial number of the new transmitter will show on the transmitter's list of the selected receiver and next to the deleted radio transmitter will appear "REPLACED".

NOTE: A remote control can be replaced with the Killer procedure up to 3 times. The "KILLER LEVEL" will be indicated in REMOTE CONTROL DETAILS

9. CHECKING FOR UPDATES

It's possible to verify if some software update is available, simply selecting the field CHECK FOR UPDATES from the HELP menu. To receive updates, you must agree with the processing of the software using data

If updates are available their download progress will be shown in the left bottom angle.

After having saved the new version's setup and having made a backup of the used database, it is possible to uninstall the current version and to install the new one.

10. READING AND MODIFICATION OF A RX

Through the MODIFY button in the left menu you can modify the details of the receiver.

Only If the receiver to read was programmed with an OPEN PLUS of which you have the license, it will appear in the database and all its features will be read. If the receiver has already be registered in the database, the system will automatically display it, otherwise you will only see a window summarizing the highlights.

To add to the database a non-registered receiver:

- Connect the device to the programmer OPEN PLUS
- Save the read information
- Name the device (the receiver will be add to the window on the right)

To assign the new receiver to an already existing installation in the database:

- Click on the added receiver with the right button of the mouse and select ASSIGN TO A REAL INSTALLATION
- Select the installation to which you want to assign the receiver, press the right button of the mouse and choose MOVE ON THIS INSTALLATION

ELIMINATION OF A RECEIVER FROM THE DATABASE

To delete a receiver from the database, select it in the window and click on the DELETE button. The system will ask for confirmation, warning that it will automatically provide for the elimination of the remote controls associated to the deleted receiver and for the updating of the database.

11. READING AND CANCELLATION OF A REMOTE CONTROL

READING: If the read remote control is already registered in the database, the system will automatically place itself on its display. If the Tx is not registered in the database, you will only see a window summarizing the data stored therein.

CANCELLATION: To remove a remote control from the database, select it in the window and click the DELETE button. The system will ask for confirmation. The elimination of the remote control will start automatically the receivers' update which it was associated to.

12. CONNECTION TO A CONTROL UNIT

It is possible to use the OPEN PLUS as if it were a JOLLY programmer, simply by connecting it to the control unit through the cable plug and activating the JOLLY function.

Select the item PROGRAMMER in the menu bar and choose ENABLE JOLLY MODE to activate the JOLLY function, or click on the ACTIVATE JOLLY MODE icon.

NOTE: The JOLLY mode will function only if the unit is powered.

CONDIZIONI DI VENDITA

Rev.02

EFFICACIA DELLE PRESENTI CONDIZIONI GENERALI DI VENDITA: Le presenti condizioni generali di vendita si applicano a tutti gli ordini indirizzati a SEA s.r.l. Tutte le vendite fatte da SEA ai clienti sono regolate secondo le presenti condizioni di vendita che costituiscono parte integrante del contratto di vendita ed annullano ogni clausola contraria o pattuizioni particolari presenti nell'ordine o in altro documento proveniente dall'acquirente (cliente)

AVVERTENZE GENERALI Gli impianti di automazioni porte e cancelli vanno realizzati esclusivamente con componenti SEA, salvo accordi specifici. L'inosservanza delle norme di sicurezza vigenti (Norm. EUROPEE EN 12453 - EN 12445 e altro) e di buona tecnica esclude la SEA da ogni responsabilità. La SEA non risponde del mancato rispetto della corretta e sicura installazione secondo le norme.

1) PROPOSTA D'ORDINE La proposta d'ordine si intenderà accettata solo dopo la sua approvazione da parte della SEA. Conseguenza della sua sottoscrizione, l'acquirente sarà vincolato alla stipula di un contratto d'acquisto, secondo quanto contenuto nella stessa proposta d'ordine e nelle presenti condizioni di vendita.

Viceversa, la mancata comunicazione all'acquirente dell'approvazione della proposta d'ordine, non comporta la sua automatica accettazione da parte della SEA

2) VALIDITÀ OFFERTA Le offerte proposte dalla SEA o dalla sua struttura commerciale periferica, avranno una validità di 30 giorni solari, salvo diversa comunicazione in merito.

3) PREZZI I prezzi della proposta d'ordine sono quelli del listino in vigore alla data della redazione della stessa. Gli sconti applicati dalla struttura commerciale periferica della SEA si intenderanno validi solo dopo la loro accettazione da parte della SEA. I prezzi si intendono per merce resa franco ns. stabilimento in Teramo, esclusi IVA ed imballaggi speciali. La SEA si riserva il diritto di modificare in qualsiasi momento il listino, dando opportuno preavviso alla rete di vendita. Le condizioni speciali riservate agli acquisti con formula agevolata Qx, Qx1, Qx2, Qx3 sono riservate ai distributori ufficiali dietro accettazione scritta da parte della direzione SEA.

4) PAGAMENTI Le forme di pagamento ammesse sono quelle comunicate o accettate di volta in volta dalla SEA. Il tasso di interesse sul ritardo da pagamento è del 1,5% mensile e comunque non oltre il tasso massimo legalmente consentito.

5) CONSEGNA La consegna avverrà indicativamente ma non tassativamente entro 30 giorni lavorativi dalla data di ricezione dell'ordine, salvo diverse comunicazioni in merito. Il trasporto degli articoli venduti sarà effettuato a spese ed a rischio dell'acquirente. La SEA si libera dall'obbligo della consegna rimettendo la merce al vettore, sia esso scelto dalla SEA oppure dall'acquirente. Eventuali smarrimenti e/o danneggiamenti della merce dovuti al trasporto, sono a carico dell'acquirente.

6) RECLAMI Eventuali reclami e/o contestazioni dovranno pervenire alla SEA entro 8 giorni solari dalla ricezione della merce, supportati da idonei documenti provanti la loro veridicità.

7) FORNITURA L'ordine in oggetto viene assunto da SEA senza alcun impegno e subordinatamente alle possibilità di approvvigionamento delle materie prime occorrenti alla produzione; eventuali mancate esecuzioni totali o parziali non possono dar luogo a reclami e riserve per danni. La fornitura SEA è strettamente limitata alla sola merce di sua produzione, esclusi il montaggio, l'installazione ed il collaudo. La SEA declina pertanto ogni responsabilità per danni che dovessero derivare, anche a terzi,

dall'inosservanza delle norme di sicurezza e della buona regola d'arte nelle fasi dell'installazione e dell'impiego dei prodotti venduti.

8) GARANZIA

La garanzia minima è di 12 mesi e può essere estesa, come di seguito, in caso di riconsegna del certificato di garanzia.

SILVER: Le parti meccaniche degli operatori rientranti in tale categoria sono garantite per 24 mesi dalla data di fabbricazione riportata sull'operatore.

GOLD: Le parti meccaniche degli operatori rientranti in tale categoria sono garantite per 36 mesi dalla data di fabbricazione riportata sull'operatore.

PLATINUM: Le parti meccaniche degli operatori rientranti in tale categoria sono garantite per 36 mesi dalla data di fabbricazione riportata sull'operatore. La garanzia di base (36 mesi) sarà estesa per ulteriori 24 mesi (fino ad un totale di 60 mesi) qualora venga acquistato il certificato di garanzie che dovrà essere compilato e rispedito alla SEA s.r.l. entro 60 giorni dall'acquisto. L'elettronica e le centrali di comando sono garantite per 24 mesi dalla data di fabbricazione. Nell'eventualità di difettosità del prodotto, la SEA si impegna alla sua sostituzione gratuita oppure alla sua riparazione, previa restituzione al proprio centro di riparazione. La definizione di stato di garanzia è ad insindacabile giudizio della SEA. I pezzi sostitutivi restano di proprietà della SEA. In modo vincolante, il materiale dell'acquirente ritenuto in garanzia deve essere spedito al centro di riparazione della SEA in porto franco e sarà rispedito dalla SEA in porto assegnato. La garanzia non si estende alla manodopera eventualmente accorsa. I difetti riconosciuti non produrranno alcuna responsabilità e/o richiesta di danni, di qualsiasi natura essi siano, da parte dell'acquirente nei riguardi della SEA. La garanzia non è in ogni caso riconosciuta qualora sia stata apportata alla merce qualsivoglia modifica, oppure vi sia stato un uso improprio, oppure si sia in presenza di una qualsivoglia sua manomissione o di un montaggio non corretto, oppure se sia stata rimossa l'etichetta apposta dal produttore comprensiva del marchio SEA registrato n° 804888. La garanzia non è inoltre valida nel caso la merce SEA sia stata in parte o in toto accoppiata a componenti meccanici e/o elettronici non originali, ed in particolare in assenza di una specifica autorizzazione in merito, ed inoltre nel caso in cui l'acquirente non sia in regola con i pagamenti. La garanzia non comprende danni derivati dal trasporto, materiale di consumo, avarie dovute al mancato rispetto delle specifiche prestazionali dei prodotti indicate nel listino. Non è riconosciuto alcun indennizzo durante il tempo di riparazione e/o sostituzione della merce in garanzia. La SEA declina ogni responsabilità per danni a cose o persone derivanti dall'inosservanza delle norme di sicurezza e della non conforme installazione o dall'impiego errato dei prodotti venduti. La riparazione dei prodotti in garanzia e fuori garanzia è subordinata al rispetto delle procedure comunicate da SEA.

9) RISERVATO DOMINIO Sulla merce venduta è valida la clausola del riservato dominio, della quale la SEA deciderà autonomamente se avvalersi o meno, in virtù della quale l'acquirente acquisisce la proprietà della merce, solo dopo che il suo pagamento sia stato completamente effettuato.

10) FORO COMPETENTE Per qualsiasi controversia avente per oggetto l'applicazione di questo contratto, viene eletto competente il Foro di Teramo. La lingua valida nell'interpretazione di cataloghi, manuali di installazione, condizioni di vendita o altro è quella italiana. La SEA si riserva la facoltà di apportare modifiche tecniche atte a migliorare i propri prodotti, presenti o meno in questo Listino, in qualsiasi momento senza preavviso. La SEA declina ogni responsabilità derivante da possibili inesattezze contenute nel presente listino, derivanti da errori di stampa e/o trascrizione. Il presente Listino annulla e sostituisce quelli precedenti.

L'acquirente ai sensi della legge 196/2003 (codice privacy) acconsente all'inserimento dei propri dati personali derivanti dal presente contratto negli archivi informatici e cartacei della SEA s.r.l. al loro trattamento per motivi commerciali ed amministrativi.

Diritti di proprietà industriale: il cliente, con l'acquisto, accetta le presenti condizioni di vendita e riconosce in capo a SEA la titolarità esclusiva del marchio internazionale SEA registrato n. 804888 apposto sulle etichette dei prodotti e/o sui manuali e/o su ogni altra documentazione, e si impegna ad utilizzare il medesimo nella propria attività di rivendita e/o installazione secondo modalità che non ne riducano in alcun modo i diritti, a non rimuovere, sostituire o alterare marchi o altri segni distintivi di qualsiasi genere apposti ai prodotti.

E' vietata ogni forma di riproduzione o utilizzo del marchio SEA e di ogni altro segno distintivo presente sui prodotti, salvo autorizzazione scritta da SEA s.r.l.

Agli effetti dell'articolo 1341 del C.C. si approvano specificatamente per iscritto le clausole di cui ai numeri:

4) PAGAMENTI - 8) GARANZIA - 10) FORO COMPETENTE

TERMS OF SALES

Rev.02

EFFICACY OF THE FOLLOWING TERMS OF SALE: the following general terms of sale shall be applied to all orders sent to SEA srl. All sales made by SEA to all costumers are made under the prescription of this terms of sales which are integral part of sale contract and cancel and substitute all apposed clauses or specific negotiations present in order document received from the buyer.

GENERAL NOTICE The systems must be assembled exclusively with SEA components, unless specific agreements apply. Non-compliance with the applicable safety standards (European Standards EM12453 – EM 12445) and with good installation practice releases SEA from any responsibilities. SEA shall not be held responsible for any failure to execute a correct and safe installation under the above mentioned standards.

1) PROPOSED ORDER The proposed order shall be accepted only prior SEA approval of it. By signing the proposed order, the Buyer shall be bound to enter a purchase agreement, according to the specifications stated in the proposed order. On the other hand, failure to notify the Buyer of said approval must not be construed as automatic acceptance on the part of SEA.

2) PERIOD OF THE OFFER The offer proposed by SEA or by its branch sales department shall be valid for 30 solar days, unless otherwise notified.

3) PRICING The prices in the proposed order are quoted from the Price List which is valid on the date the order was issued. The discounts granted by the branch sales department of SEA shall apply only prior to acceptance on the part of SEA. The prices are for merchandise delivered ex-works from the SEA establishment in Teramo, not including VAT and special packaging. SEA reserves the right to change at any time this price list, providing timely notice to the sales network.

The special sales conditions with extra discount on quantity basis (Qx, Qx1, Qx2, Qx3 formula) is reserved to official distributors under SEA management written agreement.

4) PAYMENTS The accepted forms of payment are each time notified or approved by SEA. The interest rate on delay in payment shall be 1.5% every month but anyway shall not be higher than the max. interest rate legally permitted.

5) DELIVERY Delivery shall take place, approximately and not peremptorily, within 30 working days from the date of receipt of the order, unless otherwise notified. Transport of the goods sold shall be at Buyer's cost and risk. SEA shall not bear the costs of delivery giving the goods to the carrier, as chosen either by SEA or by the Buyer. Any loss and/or damage of the goods during transport, are at Buyer's cost.

6) COMPLAINTS Any complaints and/or claims shall be sent to SEA within 8 solar days from receipt of the goods, proved by adequate supporting documents as to their truthfulness.

7) SUPPLY The concerning order will be accepted by SEA without any engagement and subordinately to the possibility to get it's supplies of raw material which is necessary for the production; Eventual completely or partially unsuccessful executions cannot be reason for complains or reservations for damage. SEA supply is strictly limited to the goods of its manufacturing, not including assembly, installation and testing. SEA, therefore, disclaims any responsibility for damage deriving, also to third parties, from non-compliance of safety standards and good practice during installation and use of the purchased products.

8) WARRANTY.

The standard warranty period is 12 months. This warranty time can be extended by means of expedition of the warranty coupon as follows:

SILVER: The mechanical components of the operators belonging to this line are guaranteed for 24 months from the date of manufacturing written on the operator.

GOLD: The mechanical components of the operators belonging to this line are guaranteed for 36 months from the date of manufacturing written on the operator.

PLATINUM: The mechanical components of the operators belonging to this line are guaranteed for 36 months from the date of manufacturing written on the operator. The base warranty (36 months) will be extended for further 24 months (up to a total of 60 months) when it is acquired the certificate of warranty which will be filled in and sent to SEA s.r.l. The electronic devices and the systems of command are guaranteed for 24 months from the date of manufacturing. In case of defective product, SEA undertakes to replace free of charge or to repair the goods provided that they are returned to SEA repair centre. The definition of warranty status is by unquestionable assessment of SEA. The replaced parts shall remain propriety of SEA. Binding upon the parties, the material held in warranty by the Buyer, must be sent back to SEA repair centre with fees prepaid, and shall be dispatched by SEA with carriage forward. The warranty shall not cover any required labour activities. The recognized defects, whatever their nature, shall not produce any responsibility and/or damage claim on the part of the Buyer against SEA. The guarantee is in no case recognized if changes are made to the goods, or in the case of improper use, or in the case of tampering or improper assembly. Furthermore, the warranty shall not apply if SEA products are partly or completely coupled with non-original mechanical and/or electronic components, and in particular, without a specific relevant authorization, and if the Buyer is not making regular payments. The warranty shall not cover damage caused by transport, expendable material, faults due to non-conformity with performance specifications of the products shown in the price list. No indemnification is granted during repairing and/or replacing of the goods in warranty. SEA disclaims any responsibility for damage to objects and persons deriving from non-compliance with safety standards, installation instructions or use of sold goods.

9) RESERVED DOMAIN A clause of reserved domain applies to the sold goods; SEA shall decide autonomously whether to make use of it or not, whereby the Buyer purchases propriety of the goods only after full payment of the latter.

10) COMPETENT COURT OF LAW In case of disputes arising from the application of the agreement, the competent court of law is the tribunal of Teramo. SEA reserves the faculty to make technical changes to improve its own products, which are not in this price list at any moment and without notice. SEA declines any responsibility due to possible mistakes contained inside the present price list caused by printing and/or copying. The present price list cancels and substitutes the previous ones. The Buyer, according to the law No. 196/2003 (privacy code) consents to put his personal data, deriving from the present contract, in SEA archives and electronic files, and he also gives his consent to their treatment for commercial and administrative purposes. Industrial ownership rights: once the Buyer has recognized that SEA has the exclusive legal ownership of the registered SEA brand, he will commit himself to use it in a way which does not reduce the value of these rights, he won't also remove, replace or modify brands or any other particularity from the products. Any kind of replication or use of SEA brand is forbidden as well as of any particularity on the products, unless preventive and expressed authorization by SEA.

In accomplishment with art. 1341 of the Italian Civil Law it will be approved expressively clauses under numbers:

4) PAYMENTS - 8) GUARANTEE - 10) COMPETENT COURT OF LOW

NOTES



SEA[®]
Sistemi Elettronici
di Apertura Porte e Cancelli

SEA S.r.l.

Zona industriale 64020 S. ATTO Teramo - ITALY

Tel. +39 0861 588341 r.a. Fax +39 0861 588344

www.seateam.com

seacom@seateam.com