



**SEA**  
Sistemi elettronici  
di Aperture Porte e Cancelli

SEA S.r.l.  
DIREZIONE E STABILIMENTO:  
Zona industriale 64020 S.ATTO Teramo - (ITALY)  
Tel. 0861 588341 r.a. Fax 0861 588344



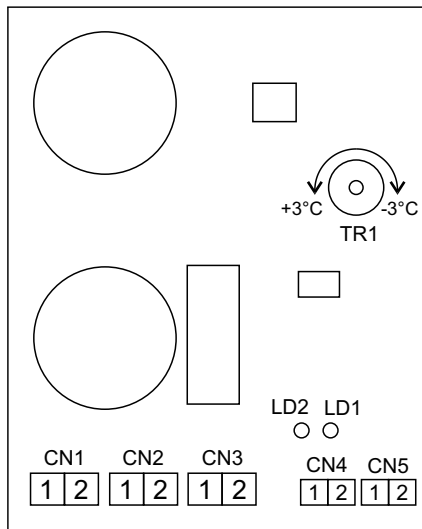
<http://www.seateam.com>  
e-mail: [seacom@seateam.com](mailto:seacom@seateam.com) (Uff. Comm.le)  
[seatec@seateam.com](mailto:seatec@seateam.com) (Uff. Tecnico)



English

## HEATER FOR HYDRAULIC MOTORS

(cod. 23105012)

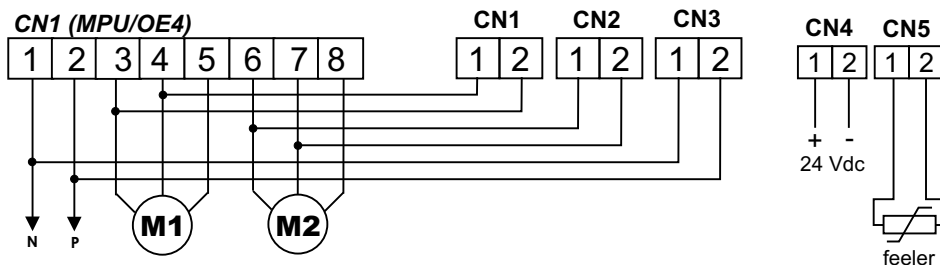


CN1	Connector motor 1
CN2	Connector motor 2
CN3	Connector power supply motors 220 Vac
CN4	Connector power supply 24Vdc logic
CN5	Connector feeler
TR1	Trimmer activation temperature
LD1	Led heater circuit activation
LD2	Led power supply logic

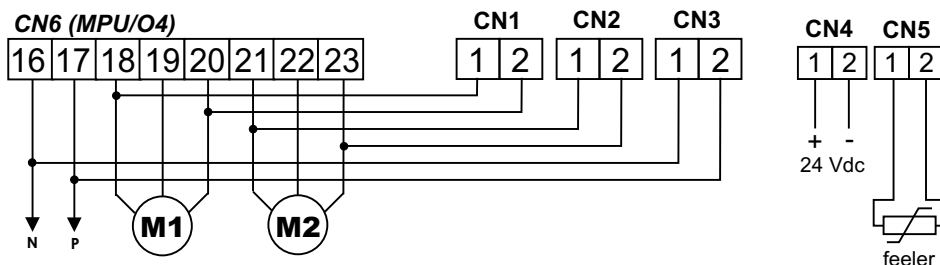
The feeler must be installed as near as possible to the body of one of the two motors, in this way it will be possible to know its temperature.

**Attention:** The connexions of the heater to the different electronic control units must be scrupulously respected.

### Connexion with control unit MPU/OE4 (23023005)



### Connexion with control unit MPU/O4 (23022005)





SEA S.r.l.  
DIREZIONE E STABILIMENTO:  
Zona industriale 64020 S.ATTO Teramo - (ITALY)  
Tel. 0861 588341 r.a. Fax 0861 588344



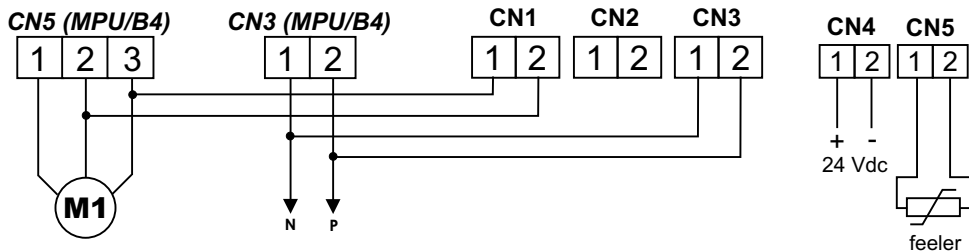
<http://www.seateam.com>

e-mail: [seacom@seateam.com](mailto:seacom@seateam.com) (Uff. Comm.le)

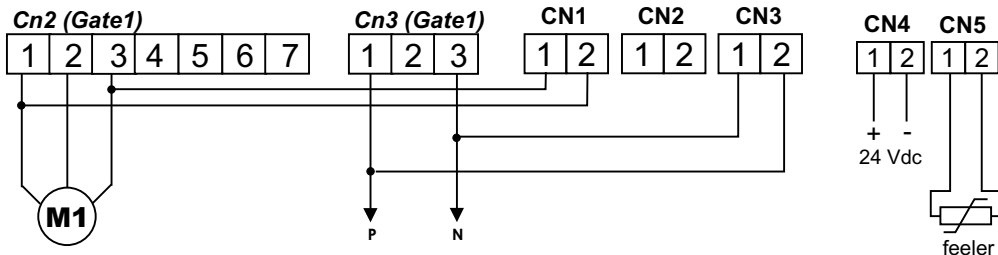
[seatec@seateam.com](mailto:seatec@seateam.com) (Uff. Tecnico)



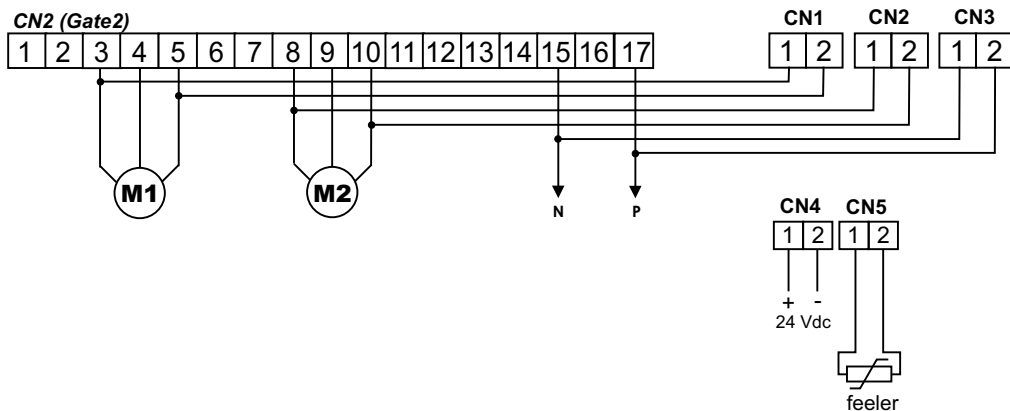
### Connexion with control unit MPU/B4 (23010005)



### Connexion with control unit GATE1



### Connexion with control unit GATE2



**SAFETY PRECAUTIONS**

All electrical installation work should conform to current regulations.  
A 16A - 0,030A differential switch must be incorporated into the source of the gate main electrical supply and the entire system must be properly earth bonded.

**SPARE PARTS**

To obtain spare parts contact: **SEA s.r.l. ZONA Ind.le, 64020 S.ATTO Teramo Italia**

**UTILISATION**

The electric device 23105012 has been designed for being used exclusively as heater of hydraulic motors for gates.

**SAFETY AND ENVIRONMENTAL COMPATIBILITY**

We recommend not to spoil the environment with product and circuit packing material.

**STORAGE**

STORAGE TEMPERATURES			
T <sub>min</sub>	T <sub>max</sub>	Humidity <sub>min</sub>	Humidity <sub>max</sub>
-40 °C	+85 °C	5% no condensation	90% no condensation

When being transported this product must be properly packaged and handled with care.

**MAINTENANCE AND OUT OF SERVICE**

The decommission and maintenance of this unit must only be carried out by specialised and authorised personnel.

**LIMIT OF GUARANTEE**

The 23105012 electronic control unit is guaranteed for a period of 24 months. The guarantee period starts from the date stamp printed on the unit. The 23105012 guarantee will be void if the unit has been incorrectly installed, not used for the purpose intended, tampered with or modified in any way.  
The validity of this guarantee only extends to the original purchaser of the unit.

**NOTE: THE MANUFACTURER CAN NOT BE DEEMED RESPONSIBLE FOR ANY DAMAGE OR INJURY CAUSED BY IMPROPER USE OF THIS PRODUCT.**

---

***SEA reserves the right to do changes or variations that may be necessary to its products with no obligation to notice.***

---