



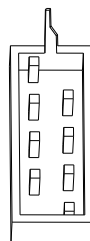
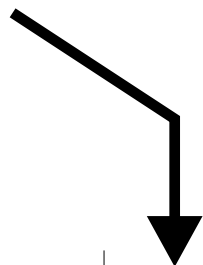
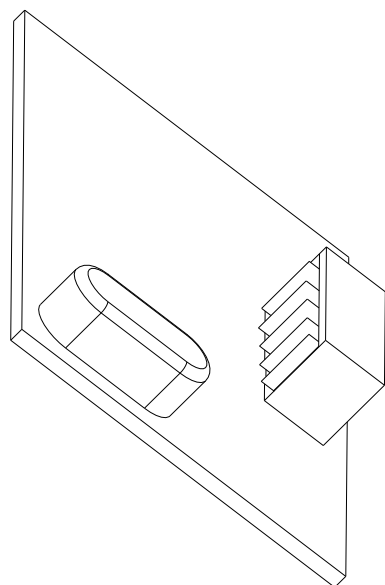
**SEA**® SEA S.r.l.  
DIREZIONE E STABILIMENTO:  
Zona Industriale 64020 S.ATTO Teramo - (ITALY)  
Sistemi Elettronici  
di Apertura Porte e Cancelli  
International registered trademark n. 804888  
Tel. 0861 588341 r.a. Fax 0861 588344

<http://www.seateam.com>  
e-mail: [seacom@seateam.com](mailto:seacom@seateam.com) (Ufficio Comm.le)  
[seatec@seateam.com](mailto:seatec@seateam.com) (Ufficio Tecnico)



**MODULO RF / RF MODULE / MODULE RF /**  
**MÓDULO RF / RF MODUL**

**(433 Mhz Cod.23120420)**



Connettore modulo ricevente  
*Receiver module connector*  
Connecteur module récepteur/  
Conector módulo receptor  
Verbindungsmodul Empfänger

Apparecchiatura elettronica  
*Electronic control unit*  
Armoire electronique  
Tarjeta electronica  
Elektronische

**Nota:** Per ulteriori informazioni sulla programmazione fare riferimento al manuale dell'apparecchiatura

**Note:** For further information on the programming refer to the manual of the control unit

**Remarque:** Pour d'autres renseignements sur la programmation faire référence au manuel de l'armoire

**Nota:** Para otras informaciones sobre la programación pueden referirse al manual de la central electrónica

**Hinweis:** Für weitere Informationen über die Programmierung im Handbuch der Steuerung nachschlagen



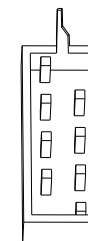
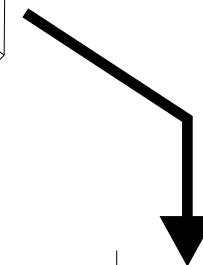
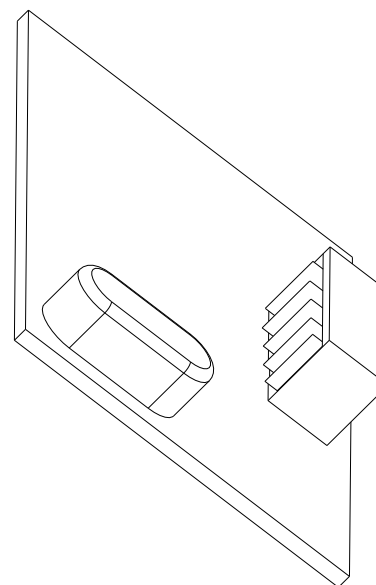
**SEA**® SEA S.r.l.  
DIREZIONE E STABILIMENTO:  
Zona Industriale 64020 S.ATTO Teramo - (ITALY)  
Sistemi Elettronici  
di Apertura Porte e Cancelli  
International registered trademark n. 804888  
Tel. 0861 588341 r.a. Fax 0861 588344

<http://www.seateam.com>  
e-mail: [seacom@seateam.com](mailto:seacom@seateam.com) (Ufficio Comm.le)  
[seatec@seateam.com](mailto:seatec@seateam.com) (Ufficio Tecnico)



**MODULO RF / RF MODULE / MODULE RF /**  
**MÓDULO RF / RF MODUL**

**(433 Mhz Cod.23120420)**



Connettore modulo ricevente  
*Receiver module connector*  
Connecteur module récepteur/  
Conector módulo receptor  
Verbindungsmodul Empfänger

Apparecchiatura elettronica  
*Electronic control unit*  
Armoire electronique  
Tarjeta electronica  
Elektronische

**Nota:** Per ulteriori informazioni sulla programmazione fare riferimento al manuale dell'apparecchiatura

**Note:** For further information on the programming refer to the manual of the control unit

**Remarque:** Pour d'autres renseignements sur la programmation faire référence au manuel de l'armoire

**Nota:** Para otras informaciones sobre la programación pueden referirse al manual de la central electrónica

**Hinweis:** Für weitere Informationen über die Programmierung im Handbuch der Steuerung nachschlagen



**SEA**®  
Sistemi Elettronici  
di Apertura Porte e Cancelli  
International registered trademark n. 804888

SEA S.r.l.  
DIREZIONE E STABILIMENTO:  
Zona industriale 64020 S.ATTO Teramo - (ITALY)  
Tel. 0861 588341 r.a. Fax 0861 588344

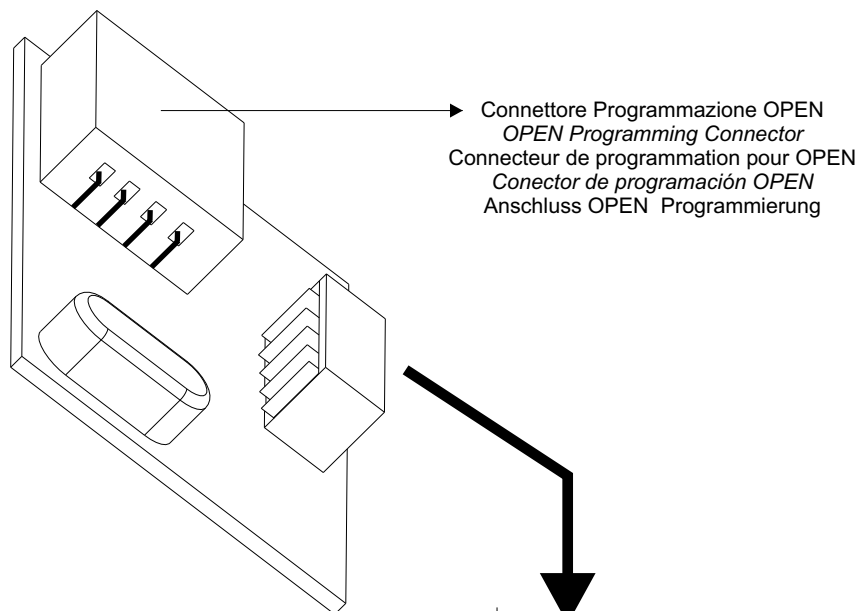


<http://www.seateam.com>  
e-mail: [seacom@seateam.com](mailto:seacom@seateam.com) (Ufficio Comm.le)  
[seatec@seateam.com](mailto:seatec@seateam.com) (Ufficio Tecnico)



**MODULO RF ROLL / RF ROLL MODULE / MODULE RF ROLL /  
MÓDULO RF ROLL / RF ROLL MODUL**

**(433 Mhz Cod.23120470 - 868 Mhz Cod.23120480)**

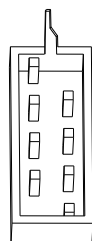


Connettore Programmazione OPEN  
OPEN Programming Connector  
Connecteur de programmation pour OPEN  
Conector de programación OPEN  
Anschluss OPEN Programmierung

**Nota:** Per ulteriori informazioni sulla programmazione  
fare riferimento al manuale dell'apparecchiatura  
**Note:** For further information on the programming refer  
to the manual of the control unit

**Remarque:** Pour d'autres renseignements sur la  
programmation faire référence au manuel de l'armoire  
**Nota:** Para otras informaciones sobre la programación  
pueden referirse al manual de la central electrónica

**Hinweis:** Für weitere Informationen über die  
Programmierung im Handbuch der Steuerung  
nachsprechen



Connettore modulo ricevente  
Receiver module connector  
Connecteur module récepteur/  
Conector módulo receptor  
Verbindungsmodul Empfänger

Apparecchiatura elettronica  
Electronic control unit  
Armoire electronique  
Tarjeta electronica  
Elektronische



**SEA**®  
Sistemi Elettronici  
di Apertura Porte e Cancelli  
International registered trademark n. 804888

SEA S.r.l.  
DIREZIONE E STABILIMENTO:  
Zona industriale 64020 S.ATTO Teramo - (ITALY)  
Tel. 0861 588341 r.a. Fax 0861 588344

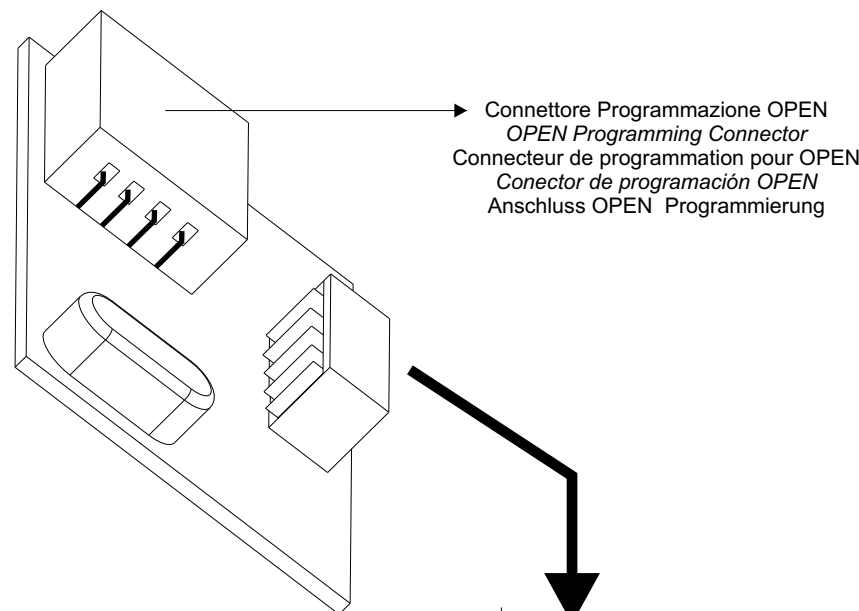


<http://www.seateam.com>  
e-mail: [seacom@seateam.com](mailto:seacom@seateam.com) (Ufficio Comm.le)  
[seatec@seateam.com](mailto:seatec@seateam.com) (Ufficio Tecnico)



**MODULO RF ROLL / RF ROLL MODULE / MODULE RF ROLL /  
MÓDULO RF ROLL / RF ROLL MODUL**

**(433 Mhz Cod.23120470 - 868 Mhz Cod.23120480)**

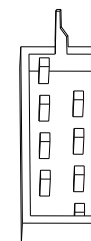


Connettore Programmazione OPEN  
OPEN Programming Connector  
Connecteur de programmation pour OPEN  
Conector de programación OPEN  
Anschluss OPEN Programmierung

**Nota:** Per ulteriori informazioni sulla programmazione  
fare riferimento al manuale dell'apparecchiatura  
**Note:** For further information on the programming refer  
to the manual of the control unit

**Remarque:** Pour d'autres renseignements sur la  
programmation faire référence au manuel de l'armoire  
**Nota:** Para otras informaciones sobre la programación  
pueden referirse al manual de la central electrónica

**Hinweis:** Für weitere Informationen über die  
Programmierung im Handbuch der Steuerung  
nachsprechen



Connettore modulo ricevente  
Receiver module connector  
Connecteur module récepteur/  
Conector módulo receptor  
Verbindungsmodul Empfänger

Apparecchiatura elettronica  
Electronic control unit  
Armoire electronique  
Tarjeta electronica  
Elektronische